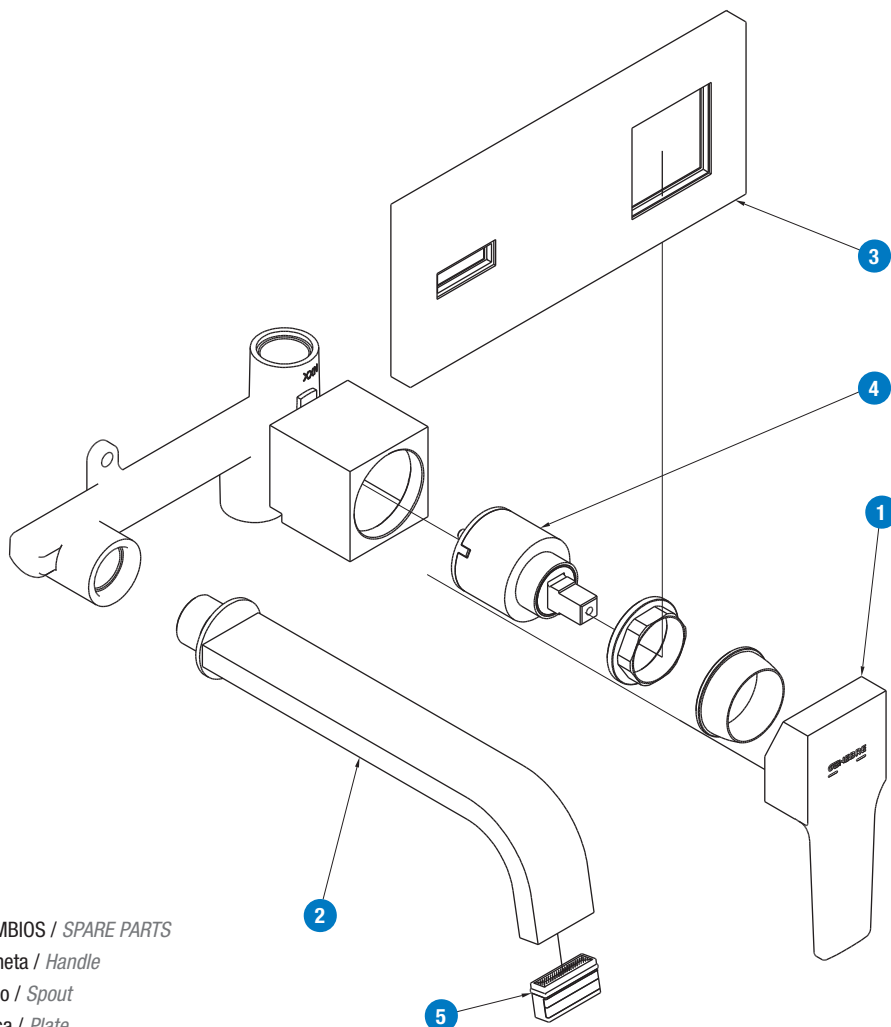


# INSTALACIÓN DEL LAVABO EMPOTRADO MURAL BUILD-IN TAP ASSEMBLING INSTALLATION

IG14002-00

DESPIECE / PARTS



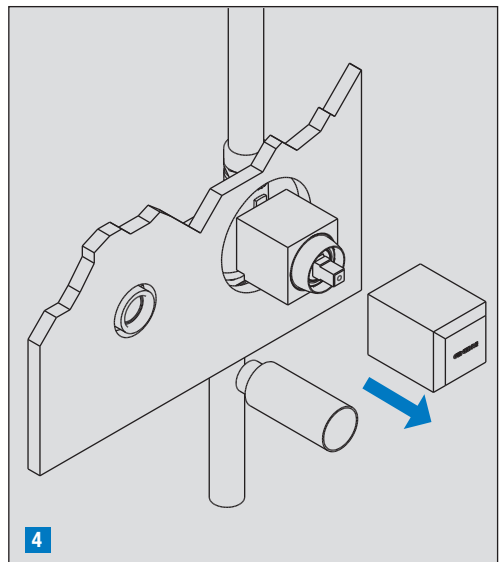
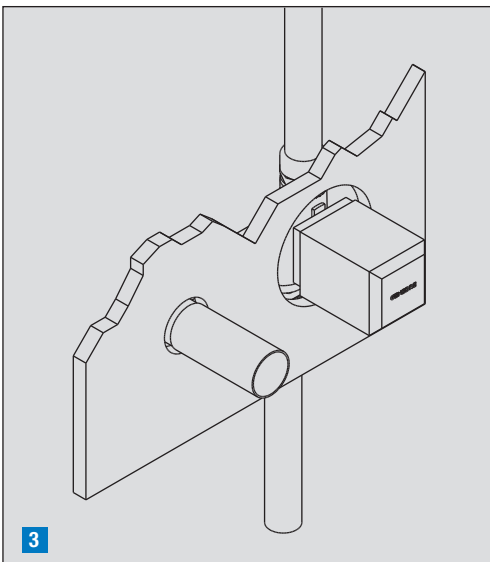
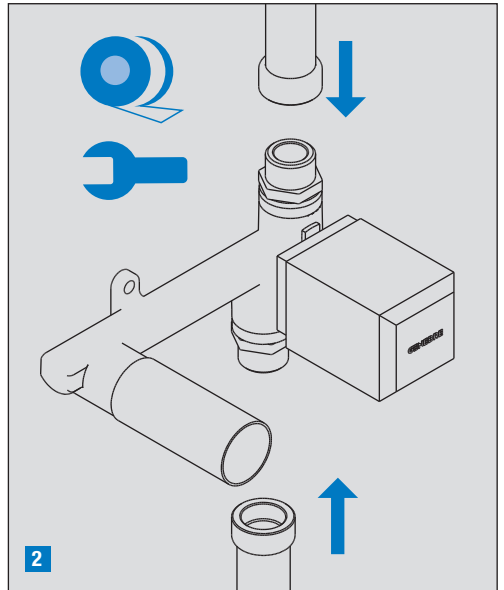
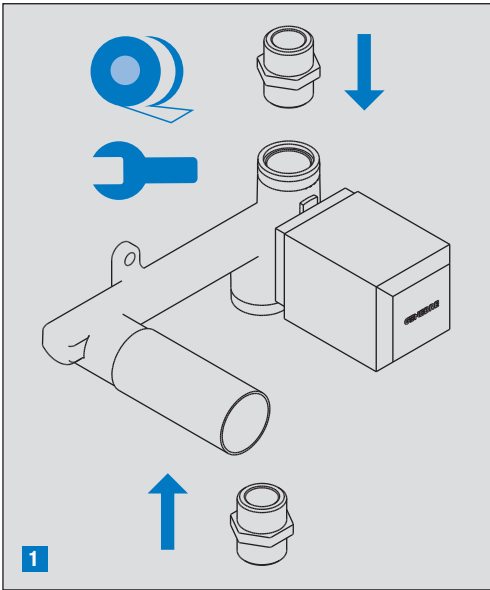
## RECAMBIOS / SPARE PARTS

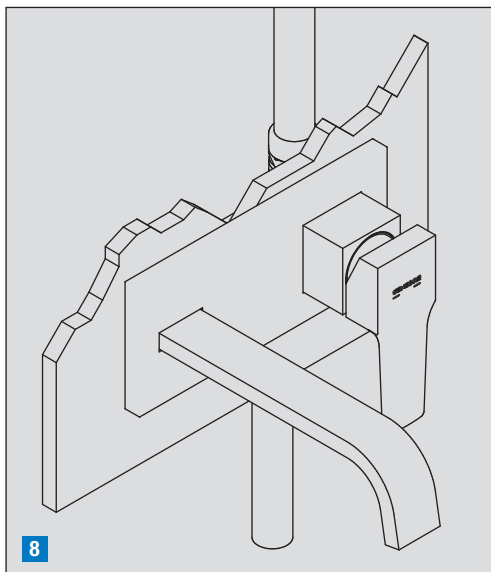
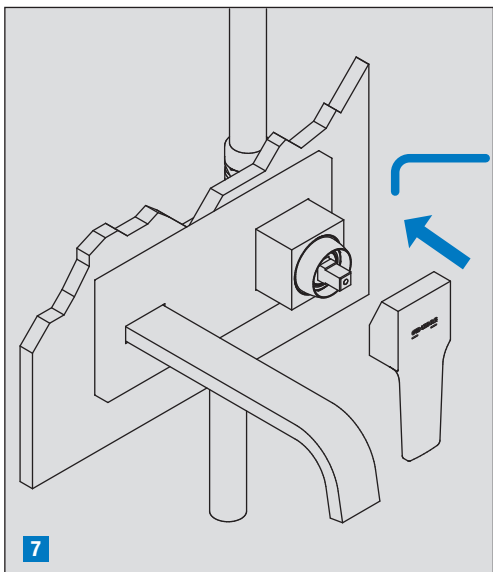
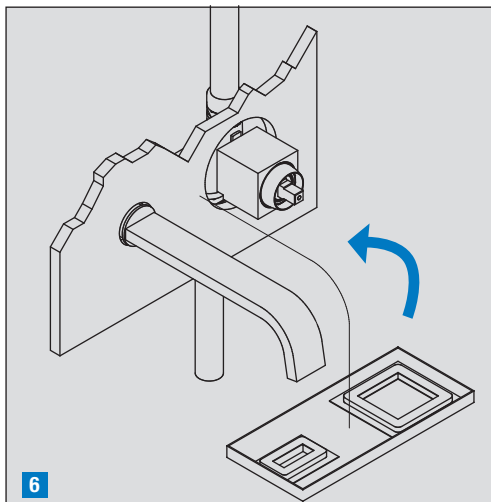
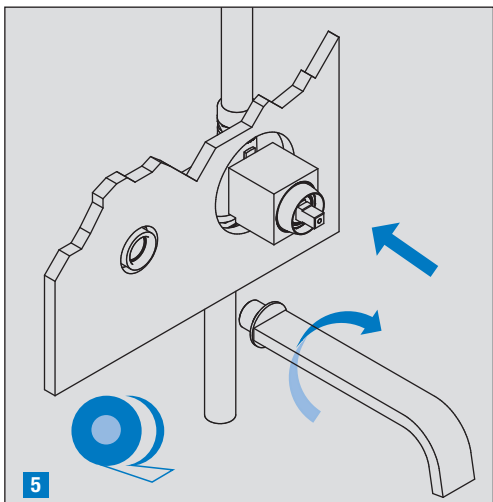
1. Maneta / Handle
2. Caño / Spout
3. Placa / Plate
4. Cartucho cerámico / Ceramical cartridge
5. Atomizador / Aerator

## INSTALACIÓN DEL GRIFO / TAP INSTALLATION




Precaución: ANTES de realizar el montaje asegúrese de que los elementos de corte están en la posición "CERRADO" para evitar inundaciones, y que no haya suciedad ni cuerpos extraños en las conexiones o en las tomas.




Caution: Before assembling the product, make sure that the flow valve is "CLOSED", and make sure that there aren't foreign bodies in the water supply connections

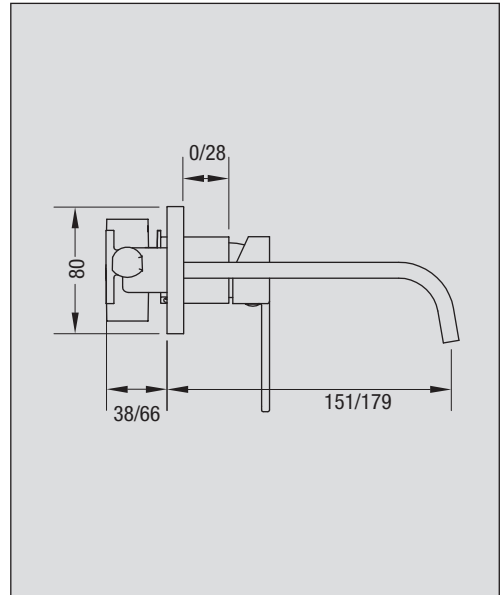
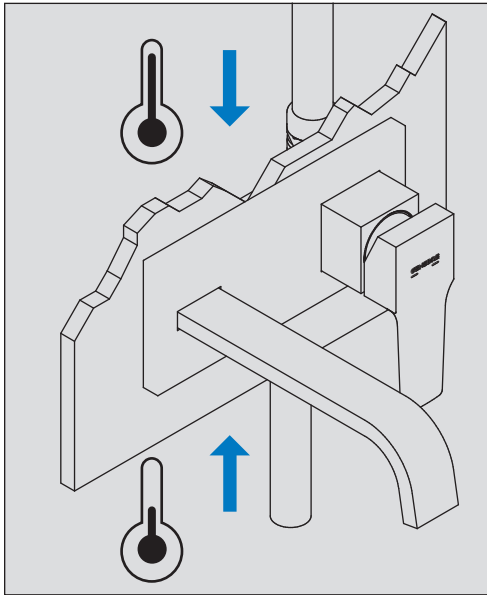




SÍMBOLOS / SYMBOLS

	Sentido de giro / <i>Turning direction</i>
	Fijar con la mano / <i>Fix by hand</i>
	Fijar con una herramienta / <i>Fix by tool</i>

	Destornillador / <i>Screwdriver</i>
	Llave Allen 2,5 / <i>Allen 2,5 key</i>
	Cinta de teflón / <i>Teflon tape</i>



LIMPIEZA / CLEANING

¡NO LIMPIAR CON ABRASIVOS O LEJÍA!  
DON'T CLEAN WITH ANY CORROSIVE PRODUCTS!



¡LIMPIAR CON AGUA FRÍA Y UNA BAYETA DE ALGODÓN!  
CLEAN WITH COLD WATER AND A COTTON NAPKIN!



¡MANTENER SIEMPRE SECO! / MAINTAIN ALWAYS DRY!

Condiciones de servicio de la instalación / Working installation conditions

Temperatura máxima recomendada / Maximum recommended temperature	65° C
Límites de temperatura de trabajo / Limit working temperature	Entre 5° C y 85° C / Between 5° C and 85° C
Presión máxima uso / Maximum pressure	10 bar
Presión recomendada / Recommended pressure	1-5 bar